



# iDance®

[www.idanceaudio.com](http://www.idanceaudio.com)



## GROOVE 426

Portable Active Trolley Speaker

User Manual

**WORLD HEADQUARTERS:**  
**iDance H.K.**

Unit 1, 6/F, MG Tower,  
133 Hoi Bun Road, Kwun Tong,  
Kowloon, Hong Kong.

**UK OFFICE:**

iDance Audio U.K.  
Graham Lloyd Building, Midland  
Structures Industrial Estate  
Amphill Road, Bedford MK42 9JJ,  
United Kingdom

**EUROPE OFFICE:**

iDance Audio Europe  
No. 9, Salland  
1948RE Beverwijk  
The Netherlands

This product meets the essential requirements of Directive 1999/5/EC.  
<http://www.idanceaudio.com/documentation/declarationofconformity/>



## WARNING

WARNING: TO REDUCE THE RISK OF FIRE OR SHOCK, DO NOT EXPOSE THIS PRODUCT TO RAIN OR MOISTURE



CAUTION: TO REDUCE THE RISK OF FIRE OR SHOCK, DO NOT REMOVE COVER OR BACK. NO USER-SERVICEABLE PARTS INSIDE. REFER SERVICING TO QUALIFIED PERSONNEL

Class II equipment symbol

This symbol indicates that the unit has a double system.



The lightning flash with arrowhead symbol inside an equilateral triangle is intended to alert User of the presence of un-insulated "hazardous voltage" within the product's enclosure, which may be of sufficient magnitude to induce a risk of electric shock to persons



The exclamation mark inside an equilateral triangle is intended to alert user of the presence of the important operating and maintenance (servicing) instructions in the literature accompanying the product.

### NOTES:

Please do not attempt to open the back cover or power adapter as opening or removing the covers may expose you to dangerous voltage or other hazards, and it will also cause the restricted servicing to be disabled: There are no user servicing components inside.

### NOTES:

This digital apparatus does not exceed the Class B limits for radio noise emissions from digital apparatus as set out in the Radio Interference Regulations of Industry Canada. These limits are designed to provide reasonable protection against harmful interference in a residential installation.

### NOTES:

- Reorient or relocate the receiving antenna.
- Increase the separation between the equipment and the receiver.
- Connect the equipment into an outlet on a circuit different from that to which the receiver is connected
- Consult the dealer or an experienced radio/TV technician for assistance.

## IMPORTANT SAFETY INSTRUCTIONS

1. Read these instructions.
2. Keep these instructions. Heed all warnings.
3. Follow all instructions.
4. Do not use this apparatus near water.
5. Clean only with dry cloth.
6. Do not block any ventilation openings.
7. Install in accordance with the manufacturer's instructions.
8. Do not install near any heat sources such as radiators, heat registers, stoves, or other apparatus (including amplifiers) that produce heat.
9. Do not defeat the safety of the polarized or grounding-type plug. A polarized plug has two blades with one wider than the other. A grounding type plug has two blades and a third grounding prong. The wide blade or the third prong are provided for your safety purpose. If the provided plug does not fit into your outlet, consult an electrician for replacement of the obsolete outlet.
10. Protect the power cord from being walked on or pinched particularly at plugs, convenience receptacles, and the point where they exit from the apparatus.
11. Only use attachments/accessories specified by the manufacturer.
12. Use only with the cart, stand, tripod, bracket, or table specified by the manufacture, or sold with the apparatus. When a cart is used, use caution when moving the cart/apparatus combination to avoid injury from tip-over. Portable Cart Warning
13. Unplug this apparatus during lightning storms or when unused for long periods of time.
14. Refer all servicing to qualified service personnel. Servicing is required when the apparatus has been damaged in any way such as power-supply cord or plug is damaged, liquid has been spilled or objects have fallen into the apparatus, the apparatus has been exposed to rain or moisture does not operate normally, or has been dropped.
15. The apparatus shall not be exposed to dripping or splashing and no objects filled with liquids, such as vases, shall be placed on the apparatus.
16. The battery shall not be exposed to excessive heat such as sunshine, fire or the like.
17. The MAINS plugs used as the disconnect device, which shall remain readily operable.



## PRODUCT FEATURES

- Ultra-low distortion amplifier
- USB MP3 player
- Built-in rechargeable battery for easy mobility
- Wired microphone
- High pressure loud speaker
- Auxiliary input for external audio device
- External 12V input for Low-power charging
- Intelligent power switch charging circuit
- USB/MICRO SD (TF) Voice recorder

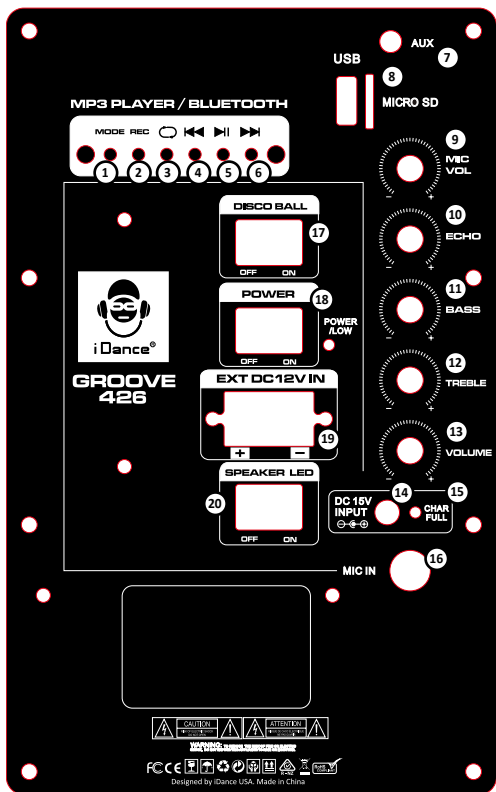
## IMPORTANT NOTE ON POWER & INTERNAL BATTERY

The Groove 426 is embedded with built-in rechargeable battery. It will run on battery power when AC power input or external 12V power input is not connected. The unit will then run on AC power or external 12V power when both or either one of them is connected to Groove 426, and the internal battery will be charged as well.

The LED indicators at the back panel indicate whether the battery is in charging, low capacity or being fully charged up. (**RED = Charging, GREEN = FULL**)

For sake of battery lifetime, it is suggested to always fully charged up the battery before removing the main AC power or external 12V input. And also please charge Groove 426 no less than one time in each 6 months.

*For initial use, please ensure to charge the Groove 426 not less than 10 hours to ensure battery capacity*



## Panel Description:

- MODE:** It is for switching between different audio source – Mini jack LINE-IN / Bluetooth audio / MP3 player
- REC:** Record button to enter record / record playback mode, see next page for detail operation
- REPEAT:** press to switch repeat mode (one/all)  
**Mic Pri:** Hold this button for 2 sec to enable/disable mic priority over music function.
- PREVIOUS:** press to switch previous song in USB/MICRO SD (TF) MP3 mode.
- PLAY/PAUSE:** Press to play/pause USB/MICRO SD (TF) MP3 player music
- NEXT:** press to switch previous song in USB/MICRO SD (TF) MP3 mode.
- AUX IN (external audio interface):** 3.5mm stereo input for connecting external audio devices. You may connect your Smartphone / Tablet as external music source with a 3.5mm line-in cable.
- USB/MICRO SD (MICRO SD (TF)) Card player:** Insert USB/MICRO SD (MICRO SD (TF)) Card drive with MP3 file to this port.
- MIC. VOL:** Turn the knob to adjust microphone volume level.
- ECHO (microphone echo):** Turn the knob to adjust microphone echo level. (Wired & Wireless Mic)
- BASS:** Turn the knob to adjust master bass level.
- TREBLE:** Turn the knob to adjust master treble level.
- VOLUME:** Turn the knob to adjust master volume level.
- DC-IN:** DC15V Power adaptor input, PLEASE ONLY USE INCLUDED AC ADAPTER PROVIDED IN THE PACK.
- Charging LED:** The LED indicators at the back panel indicate whether the battery is in charging, (RED = Charging, GREEN = FULL)
- MIC (Microphone input):** Plug wired microphone with 1/4" jack to this socket
- DISCO BALL (switch):** ON/OFF switch for GROOVE 426's Disco ball light show
- POWER (power switch):** main ON/OFF switch for Groove 426  
(Note: Battery charging is independent of Power switch ON/OFF status)
- 12V BATTERY IN (external 12V battery interface):** Connect external 12V charging/power as alternative power source; please check carefully the input polarity before connecting.
- SPEAKER LED (switch):** ON/OFF switch for Groove 426's LED light show of woofer

### **GENERAL OPERATION: USB/MICRO SD (TF) PLAYER :**

- Format the USB/MICRO SD (TF) drive to FAT-32 file system
- Ensure no files type other than mp3 in the USB/MICRO SD (TF) drive
- Plug the USB/MICRO SD (TF) drive into the Groove 426
- MP3 file will be played automatically through Groove 426
- Use the buttons in the back panel to navigate the music in USB/MICRO SD(MICRO SD (TF)) drive

▶|| Key: Press this button to play/pause the music

◀◀ VOL-key: Press for previous music,

▶▶ VOL+ key: Press for next music,

REPEAT (repetitive playing): press to select repeat mode

### **GENERAL OPERATION: Vocal Priority**

Press and hold the "O" repeat button for 2sec to activate and deactivate the vocal priority features.

When vocal priority function is ON, music level will go down when speaking on microphone and resume to normal after speech.

### **GENERAL OPERATION: USB/MICRO SD (TF) VOICE RECORDER**

#### **Record**

- Insert a USB/MICRO SD (TF) drive into the Groove426
- Connect your microphone to Groove 426 with a 1/4" jack
- Press and hold REC button for 2 second.
- Groove 426 will announce "Record" to indicate recording start
- Press REC button to stop recording.
- A record in WAV format will be created in USB/MICRO SD (TF)

#### **Playback**

- Press and trigger (not hold) the REC button to enter record playback mode
- Record in the USB/MICRO SD (TF)'s "RECORD" folder will be played and looped
- Press next / previous to navigate recording.

### **GENERAL OPERATION: BLUETOOTH AUDIO**

- Turn Groove 426 to ON and press "MODE" button to enter "Bluetooth" mode.
- Turn ON your smartphone / tablet device's Bluetooth connectivity and search for device named "GROOVE 426"
- Click " " on device to connect "GROOVE 426"
- When Bluetooth connection is established, GROOVE 426 will announce "Connected" to indicate successful connection
- Play music on your smartphone / tablet device and audio will be streamed to Groove 426

### **NOTE on Bluetooth audio**

- Ensure your smartphone / tablet device is compatible with Bluetooth A2DP audio profile
- You may use the MP3 player panel button to navigate the Bluetooth music

▶|| Key: Press this button to play/pause the music

◀◀ VOL-key: Press for previous music

▶▶ VOL+ key: Press for next music